

## Expanded Categorical Eligibility Desk Guide

	Senior or disabled member	Senior or disabled Hh does not pass the 200% GIT	Dependent care costs	Earned income used in SNAP budget	All other households
<b>Gross Income Test*</b>	200%	N/A	200%	150%	130%
<b>Categorically Eligible</b>	YES	NO	YES	YES	YES
<b>Must meet resource limit</b>	NO	YES	NO	NO	NO
<b>Must meet 100% Net Income Test</b>	NO	YES	NO	NO	NO

*Note: if someone in the household has been disqualified from SNAP due to an intentional program violation or other sanction, the household is not categorically eligible for SNAP and must instead be evaluated under regular SNAP eligibility rules.*

*\*Court ordered child support paid by a household member is always deducted from the household's gross income before applying the gross income test.*

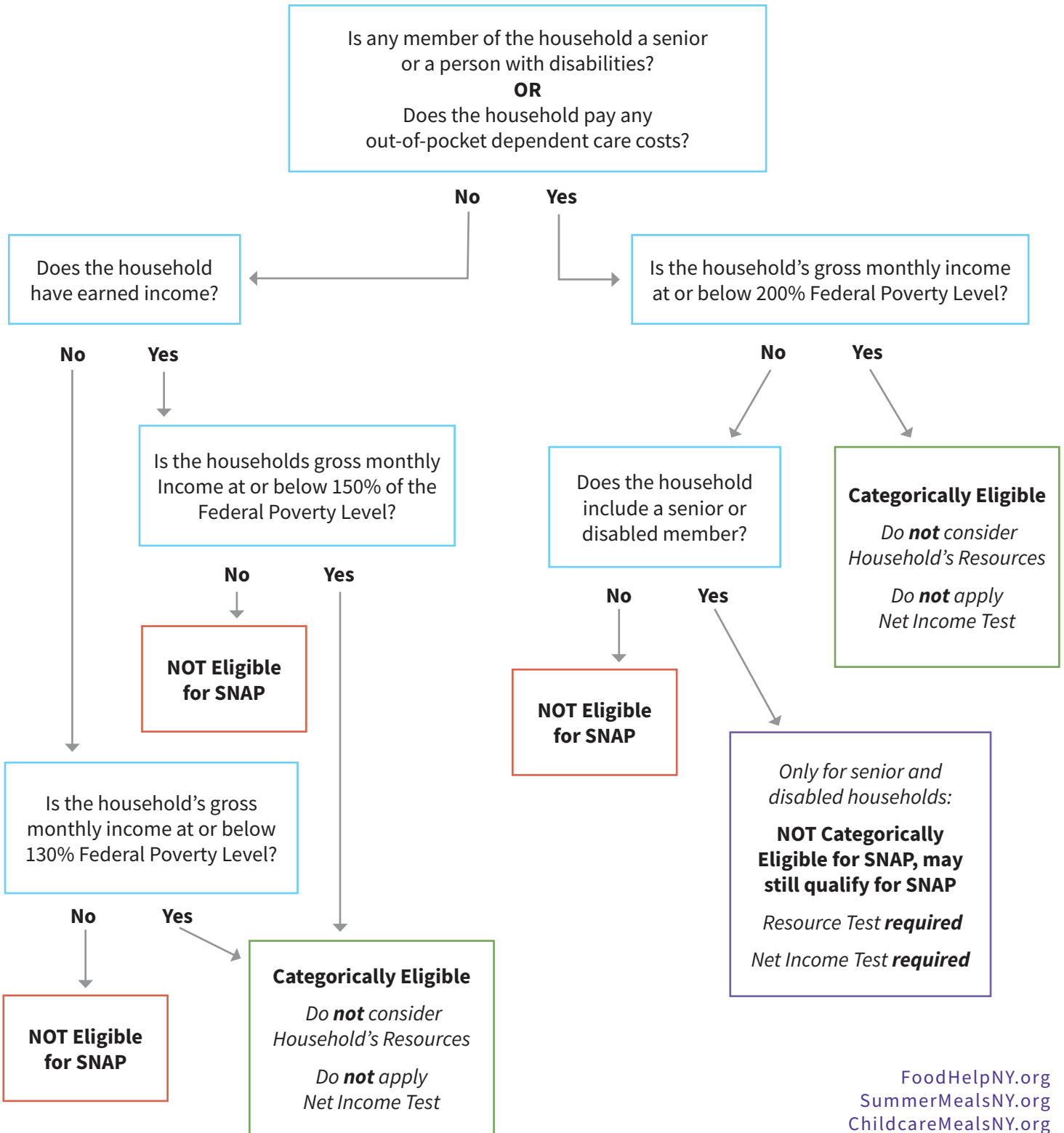
## Poverty Guidelines Chart

*effective 10/1/19 - 9/30/20*

Family Size	200% of Poverty Monthly GROSS Income	150% of Poverty Monthly GROSS Income	130% of Poverty Monthly GROSS Income
1	\$2,082	\$1,562	\$1,354
2	\$2,818	\$2,114	\$1,832
3	\$3,555	\$2,667	\$2,311
4	\$4,292	\$3,219	\$2,790
5	\$5,028	\$3,772	\$3,269
6	\$5,765	\$4,324	\$3,748
7	\$6,502	\$4,877	\$4,227
8	\$7,238	\$5,429	\$4,705
Each Additional Person	+\$737	\$553	+\$479

# Determining a Household's Categorical Eligibility for SNAP

Any household with a member who is currently disqualified from SNAP due to an Intentional Program Violation (IPV) or sanction is not categorically eligible for SNAP. These households may still qualify for SNAP under regular SNAP budgeting rules.



[FoodHelpNY.org](http://FoodHelpNY.org)  
[SummerMealsNY.org](http://SummerMealsNY.org)  
[ChildcareMealsNY.org](http://ChildcareMealsNY.org)  
[SchoolMealsHubNY.org](http://SchoolMealsHubNY.org)  
[AfterschoolMealsNY.org](http://AfterschoolMealsNY.org)  
[HungerSolutionsNY.org](http://HungerSolutionsNY.org)

